

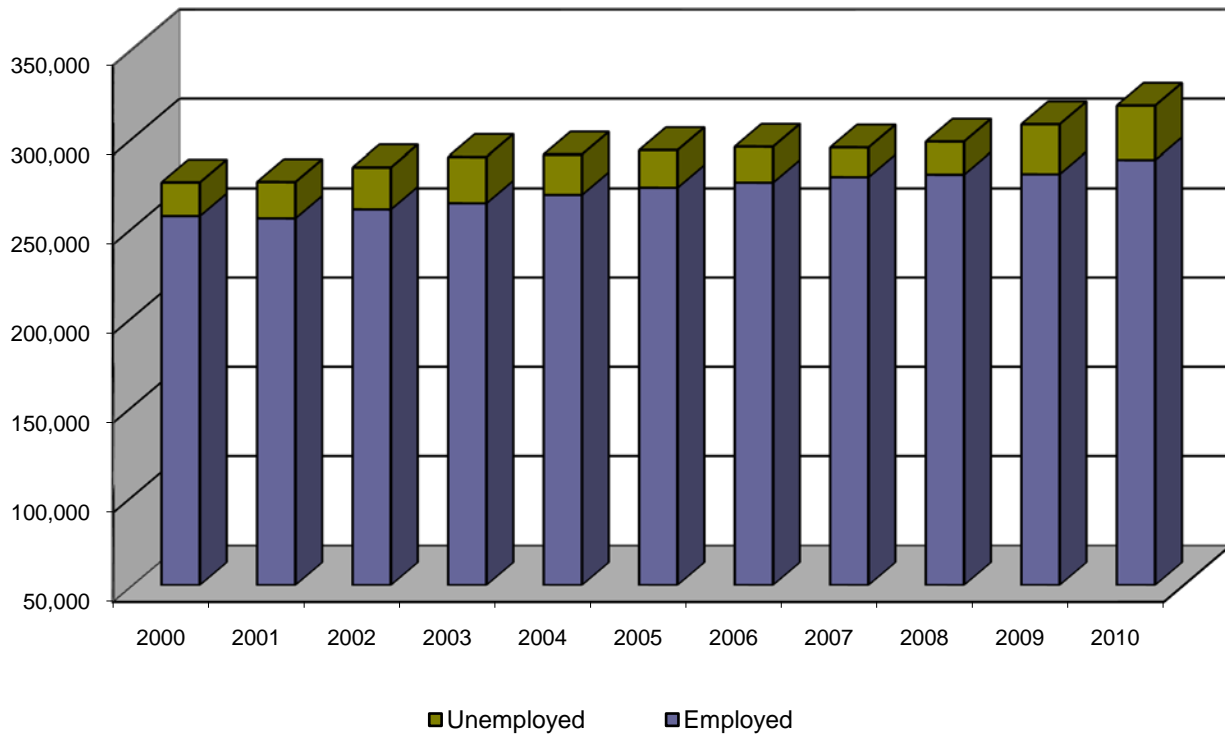
El Paso / Juarez Borderplex



Business Barometers 2011

WHERE BUSINESS IS HEADED

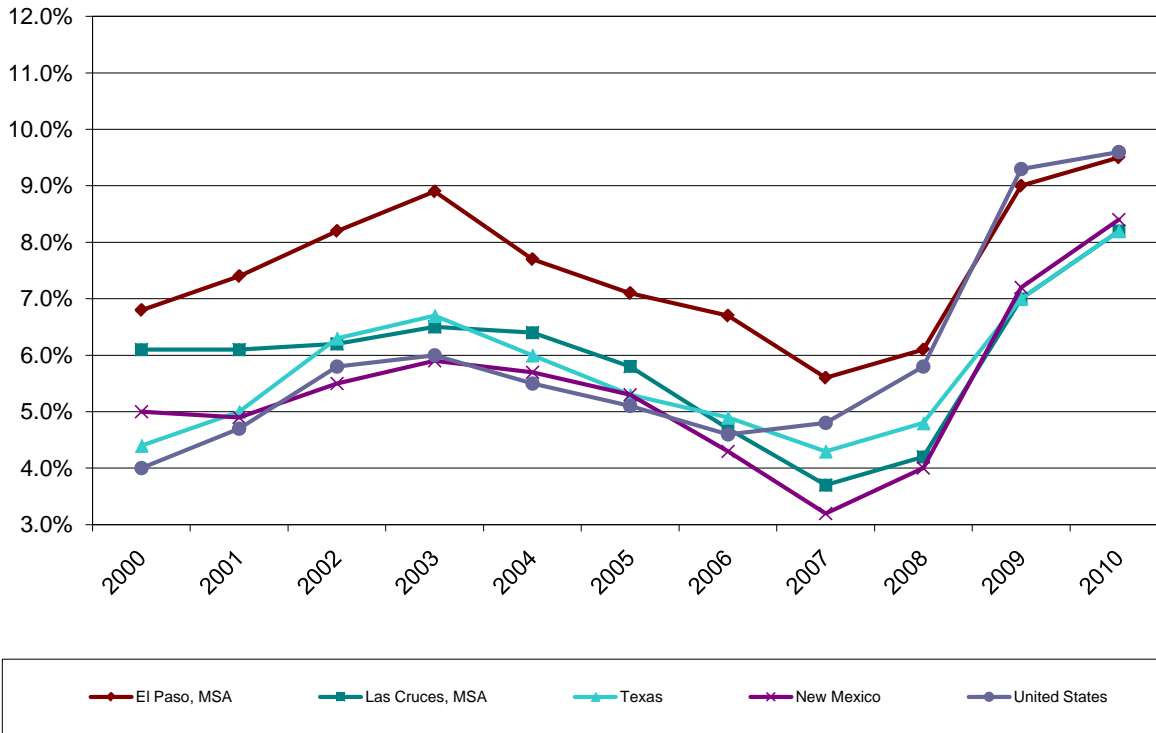
El Paso MSA: Labor Force



<u>Year</u>	<u>Employed</u>	<u>Unemployed</u>	<u>Civilian Labor Force</u>	<u>Unemployment Rate</u>
2000	256,553	18,721	275,274	6.8%
2001	255,247	20,261	275,508	7.4%
2002	260,275	23,358	283,633	8.2%
2003	263,688	25,796	289,484	8.9%
2004	268,391	22,402	290,793	7.7%
2005	272,391	20,827	293,218	7.1%
2006	275,230	19,911	295,141	6.7%
2007	278,300	16,400	294,700	5.6%
2008	279,696	18,294	297,990	6.1%
2009	279,918	27,726	307,644	9.0%
2010	287,853	30,262	318,115	9.5%

Source: Texas Workforce Commission Labor Market Report, April 2011

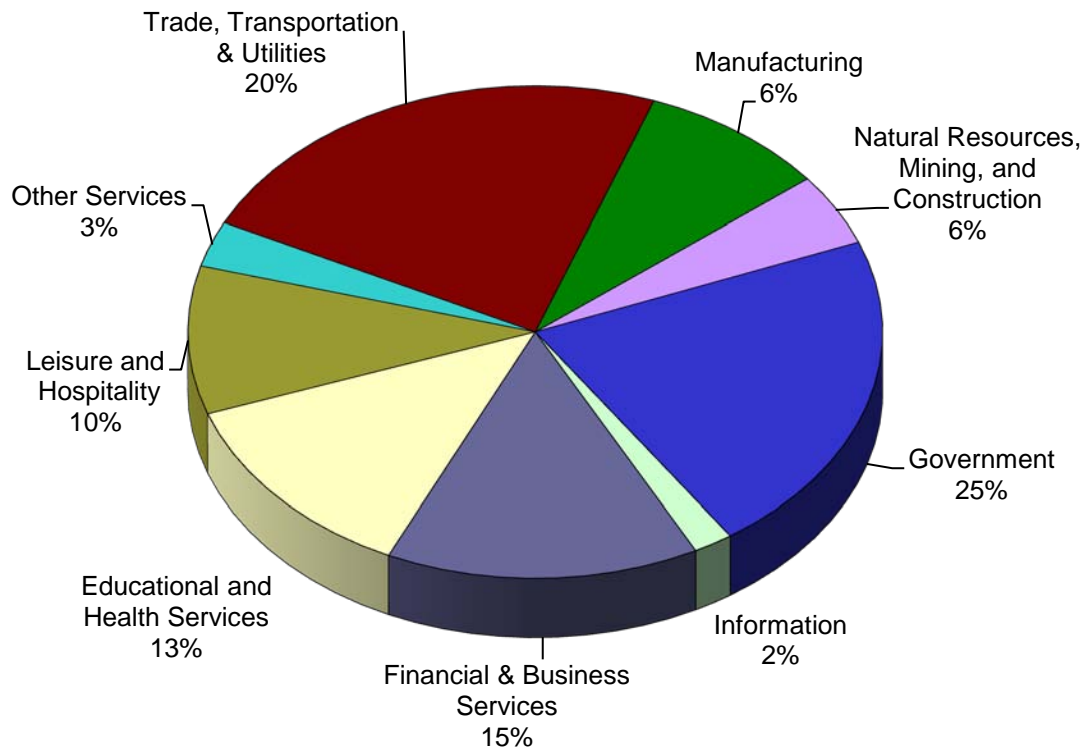
Unemployment Rates



Year	El Paso, MSA	Las Cruces, MSA	Texas	New Mexico	United States	Gap in Unemployment (EP-US)
2000	6.8%	6.1%	4.4%	5.0%	4.0%	2.8%
2001	7.4%	6.1%	5.0%	4.9%	4.7%	2.7%
2002	8.2%	6.2%	6.3%	5.5%	5.8%	2.4%
2003	8.9%	6.5%	6.7%	5.9%	6.0%	2.9%
2004	7.7%	6.4%	6.0%	5.7%	5.5%	2.2%
2005	7.1%	5.8%	5.3%	5.3%	5.1%	2.0%
2006	6.7%	4.7%	4.9%	4.3%	4.6%	2.1%
2007	5.6%	3.7%	4.3%	3.2%	4.8%	0.8%
2008	6.1%	4.2%	4.8%	4.0%	5.8%	0.3%
2009	9.0%	7.0%	7.0%	7.2%	9.3%	-0.3%
2010	9.5%	8.2%	8.2%	8.4%	9.6%	-0.1%

Sources: Texas Workforce Commission, New Mexico Department of Labor, U.S Bureau of Labor Statistics, April 2011

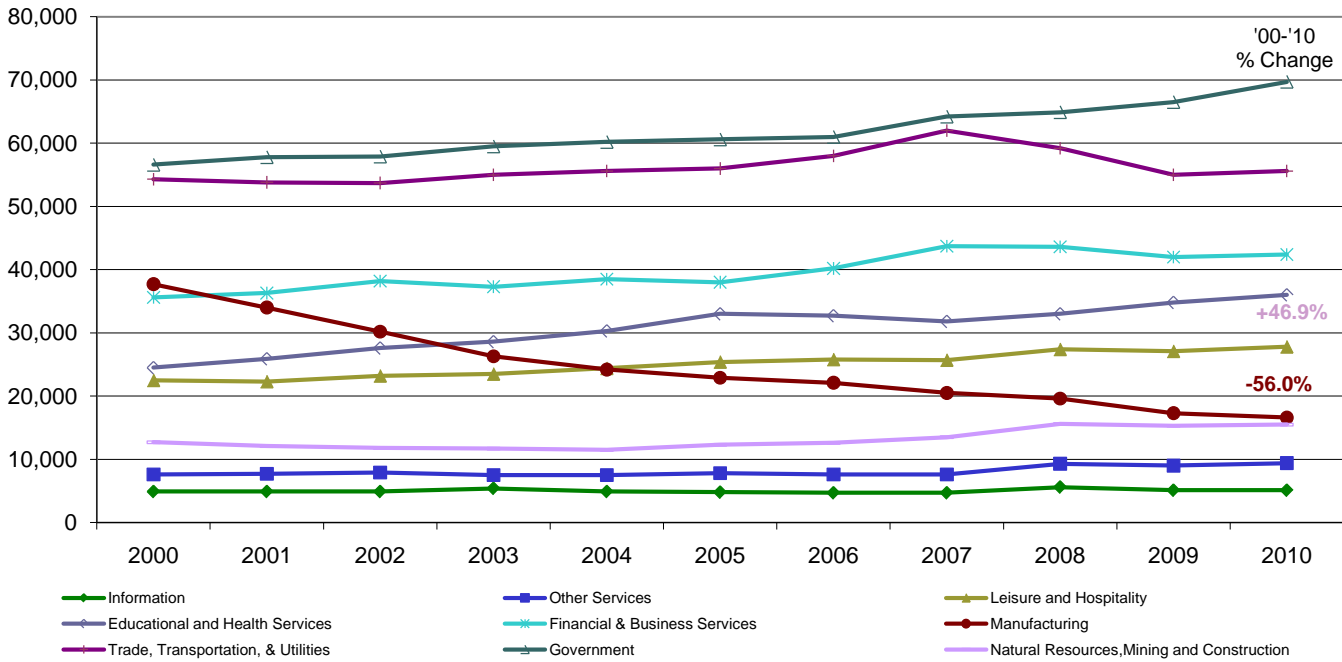
Labor Force Overview 2010



Economic Sector	Annual Avg for 2010	2010 Percent of Total
<i>Manufacturing</i>	16,600	6%
<i>Natural Resources, Mining, and Construction</i>	15,500	6%
<i>Trade, Transportation, and Utilities</i>	55,600	20%
<i>Information</i>	5,100	2%
<i>Financial & Business Services</i>	42,400	15%
<i>Educational and Health Services</i>	36,000	13%
<i>Leisure and Hospitality</i>	27,800	10%
<i>Other Services</i>	9,400	3%
<i>Government</i>	69,700	25%
Total Employment:	278,100	100%

Source: Texas Workforce Commission, Labor Market Information, April 2011

Job Growth in El Paso, MSA

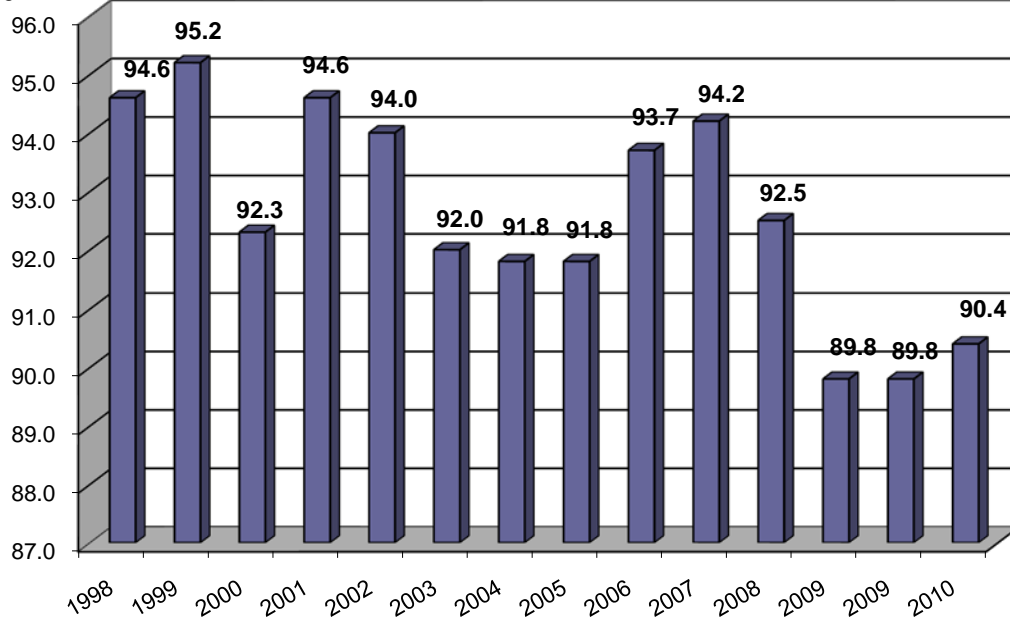


Economic Sector	2000	2001	2002	2003	2004	2005	2006	2007	2008	2009	2010	2000-2010 Change	Percent Change
Information	4,900	4,900	4,900	5,400	4,900	4,800	4,700	4,700	5,600	5,100	5,100	200	4.1%
Other Services	7,600	7,700	7,900	7,500	7,500	7,800	7,600	7,600	9,300	9,000	9,400	1,800	23.7%
Leisure and Hospitality	22,500	22,300	23,200	23,500	24,400	25,400	25,800	25,700	27,400	27,100	27,800	5,300	23.6%
Educational and Health Services	24,500	25,900	27,600	28,600	30,300	33,000	32,700	31,800	33,000	34,800	36,000	11,500	46.9%
Financial & Business Services	35,600	36,300	38,200	37,300	38,500	38,000	40,200	43,700	43,600	42,000	42,400	6,800	19.1%
Natural Resources, Mining and Construction	12,700	12,100	11,800	11,700	11,500	12,300	12,600	13,500	15,600	15,300	15,500	2,800	22.0%
Manufacturing	37,700	34,000	30,200	26,300	24,200	22,900	22,100	20,500	19,600	17,300	16,600	-21,100	-56.0%
Trade, Transportation, & Utilities	54,300	53,800	53,700	55,000	55,600	56,000	58,000	62,000	59,200	55,000	55,600	1,300	2.4%
Government	56,600	57,800	57,900	59,500	60,200	60,600	61,000	64,200	64,900	66,500	69,700	13,100	23.1%

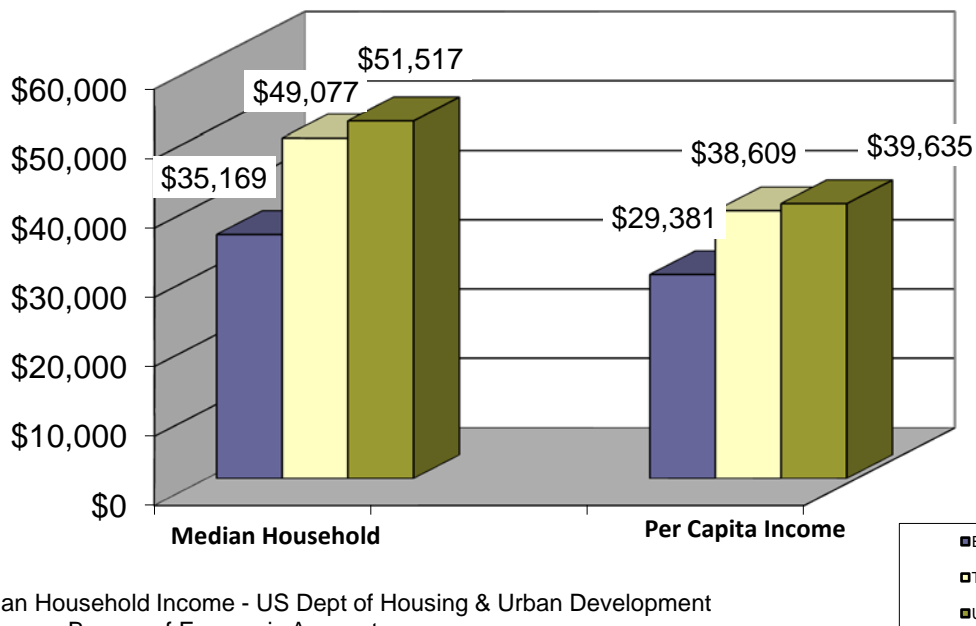
Source: Texas Workforce Commission, Labor Market Information, April 2011

Cost of Living Index for the City of El Paso

National Average = 100

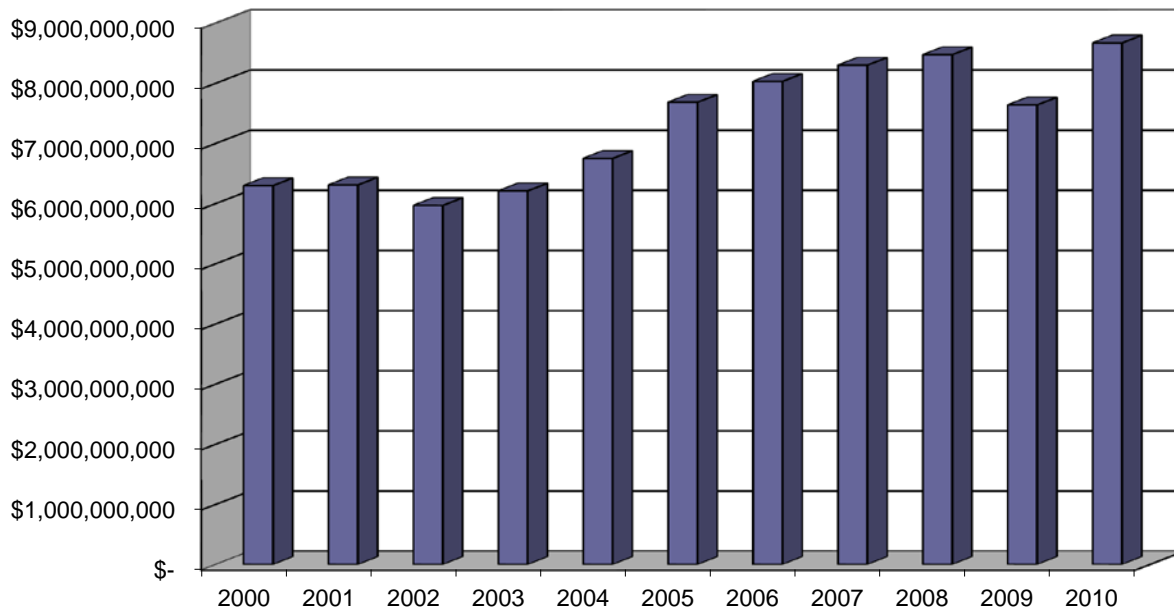


Income Levels for the City of El Paso, Texas & The U.S. 2010



Sources: Median Household Income - US Dept of Housing & Urban Development
Per Capita Income - Bureau of Economic Accounts

El Paso Gross Retail Sales



El Paso Retail Sales by Area

	Westside	Central	Northeast	East	Far East	Totals
2000	\$ 1,343,758,647	\$ 1,034,985,900	\$ 378,184,730	\$ 3,225,191,729	\$ 316,065,871	\$ 6,298,186,877
2001	\$ 1,249,274,194	\$ 1,018,430,086	\$ 448,489,292	\$ 3,290,572,928	\$ 302,784,875	\$ 6,309,551,375
2002	\$ 1,173,861,085	\$ 885,206,254	\$ 375,889,447	\$ 3,217,826,380	\$ 315,161,859	\$ 5,967,945,025
2003	\$ 1,232,805,467	\$ 855,600,054	\$ 408,146,605	\$ 3,379,159,451	\$ 334,760,214	\$ 6,210,471,791
2004	\$ 1,416,721,672	\$ 916,288,876	\$ 462,495,672	\$ 3,560,779,909	\$ 393,264,901	\$ 6,749,551,030
2005	\$ 1,605,475,139	\$ 1,184,100,247	\$ 495,321,850	\$ 3,903,638,008	\$ 495,314,326	\$ 7,683,849,570
2006	\$ 1,704,534,007	\$ 1,228,540,896	\$ 454,737,019	\$ 4,064,756,001	\$ 577,963,668	\$ 8,030,531,591
2007	\$ 1,821,096,906	\$ 1,056,248,809	\$ 552,176,204	\$ 4,261,479,137	\$ 608,977,190	\$ 8,299,978,246
2008	\$ 1,821,904,628	\$ 1,082,144,426	\$ 583,242,189	\$ 4,207,954,668	\$ 778,655,144	\$ 8,473,901,055
2009	\$ 1,652,585,347	\$ 895,368,241	\$ 562,643,413	\$ 3,833,557,679	\$ 694,718,435	\$ 7,638,873,115
2010	\$ 1,851,251,872	\$ 883,487,702	\$ 602,805,358	\$ 4,500,191,671	\$ 831,773,421	\$ 8,669,510,024

Westside: 79821, 79835, 79911, 79912, 79922, 79932

Central: 79901, 79902, 79903, 79905, 79906, 79916, 79918, 79930, 79968

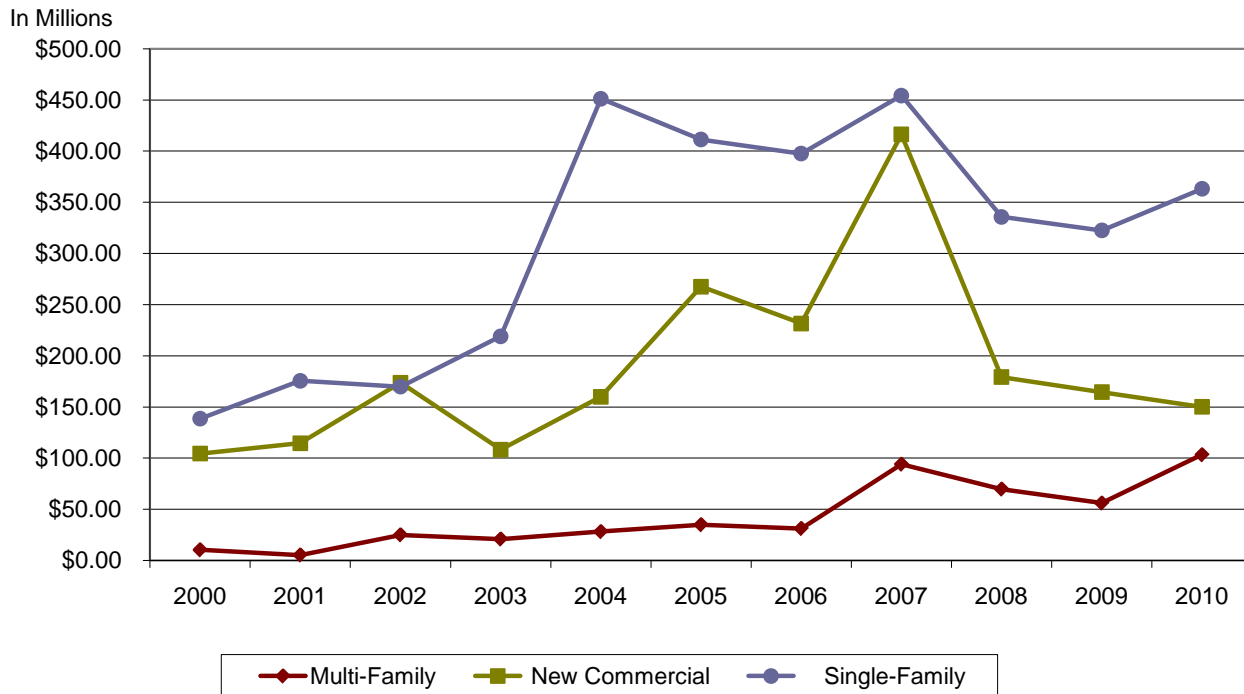
Northeast: 79904, 79908, 79924, 79934

East: 79907, 79915, 79925, 79935, 79936

Far East: 79836, 79838, 79849, 79853, 79927, 79928, 79938

Source: State of Texas Comptroller of Public Accounts, September 2011

City of El Paso Permit Construction Values



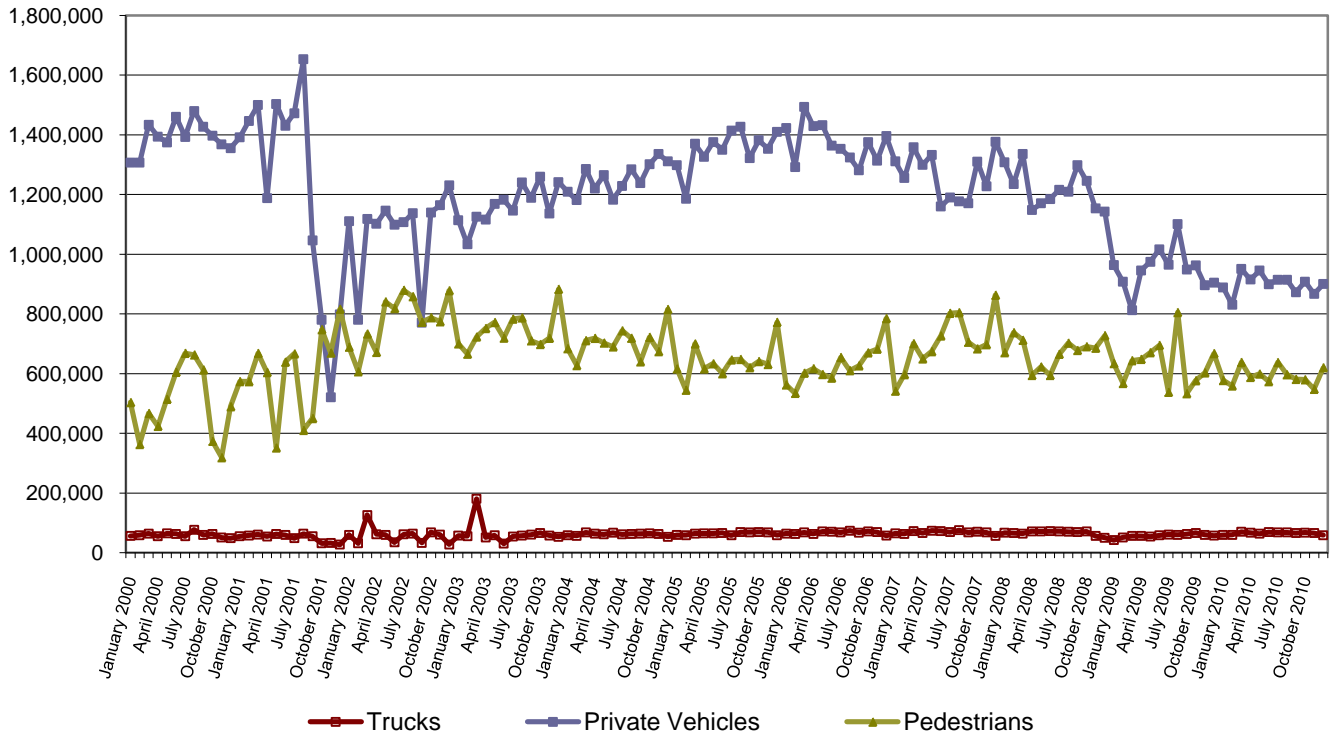
City of El Paso New Permit Construction Units and Value

Year	Multi-Family		New Commercial		Single-Family		Totals per Year*	
	Units	Value	Units	Value	Units	Value	Units	Value
	(in millions)	(in millions)	(in millions)	(in millions)	(in millions)	(in millions)	(in millions)	(in millions)
2000	85	\$10.39	599	\$104.35	2,649	\$138.47	10,239	\$449.54
2001	40	\$5.32	198	\$114.66	3,051	\$175.54	10,598	\$489.14
2002	106	\$25.02	208	\$173.65	2,960	\$169.87	11,914	\$556.65
2003	117	\$20.92	204	\$108.36	3,451	\$219.06	12,747	\$520.28
2004	131	\$28.17	243	\$159.95	3,439	\$451.17	12,602	\$801.86
2005	159	\$34.96	252	\$267.55	3,279	\$411.34	12,458	\$890.36
2006	216	\$31.25	279	\$231.64	3,126	\$397.65	12,899	\$937.86
2007	286	\$94.11	219	\$416.28	2,996	\$454.29	16,934	\$1,167.50
2008	156	\$69.77	148	\$179.17	2,317	\$335.85	17,438	\$880.95
2009	88	\$56.10	204	\$164.46	2,202	\$322.46	19,614	\$898.00
2010	146	\$103.34	133	\$150.07	2,450	\$363.12	33,470	\$688.59

*Totals per Year include Multi-Family, New Commercial, and Single-Family, plus permits for roofing, signs, schools, swimming pools, residential alterations, other non residential buildings, etc.

Source: City of El Paso, Building and Permits & Inspections Department, Departmental Report 2010

Northbound Crossings: Regional Bridges and Ports of Entry 2000 - 2010



Yearly Totals

Daily Averages

Year	Yearly Totals			Daily Averages		
	Trucks	Private Vehicles	Pedestrians	Trucks	Private Vehicles	Pedestrians
2000	720,406	16,696,302	6,009,325	1,974	45,743	16,464
2001	612,938	14,730,628	7,174,530	1,679	40,358	19,656
2002	694,868	12,906,708	9,313,831	1,904	35,361	25,517
2003	788,080	13,951,925	8,915,605	2,159	38,224	24,426
2004	748,560	15,044,027	8,452,210	2,051	41,217	23,157
2005	774,746	16,214,936	7,673,828	2,123	44,424	21,024
2006	811,546	16,477,117	7,532,232	2,223	45,143	20,636
2007	823,724	15,169,417	8,450,519	2,257	41,560	23,152
2008	804,712	14,647,463	8,085,769	2,205	40,130	22,153
2009	690,087	11,398,951	7,587,361	1,891	31,230	20,787
2010	786,403	10,807,486	7,103,516	2,155	29,610	19,462

* Bridges reported are Paso Del Norte, Bridge of Americas, Ysleta Bridge, Stanton DCL and Santa Teresa

Source: U.S. Customs and Border Protection, April 2011

U.S./Mexico Trade for Border Cities 2010

City	Import \$ Value (in billions)	%	Export \$ Value (in billions)	%
Laredo, TX	\$102.6	44.3%	\$81.2	50.1%
El Paso, TX	\$41.9	18.1%	\$29.2	18.0%
San Diego CA	\$32.6	14.1%	\$16.3	10.0%
Nogales, AZ	\$15.9	6.9%	\$8.8	5.4%
Hidalgo TX	\$15.8	6.8%	\$8.7	5.4%
Eagle Pass TX	\$11.2	4.8%	\$5.7	3.5%
Calexico East, CA	\$5.9	2.5%	\$4.7	2.9%
Brownsville, TX	\$5.9	2.5%	\$7.6	4.7%
Total	\$231.8	100%	\$162.2	100%

Top Imports and Exports Through El Paso - 2010

Top 10 Imports		
Description	Imported Value	% of Total Imports
Television and Radio Broadcast Receivers	\$3,764,416,145	5.1%
Automatic Data Processing Machines	\$2,788,128,671	3.8%
Ignition Wiring sets	\$1,951,842,754	2.7%
Motor Vehicles for the Transport of persons	\$1,906,872,214	2.6%
Motor Vehicles for the Transport of goods	\$1,058,763,989	1.4%
Compression-ignition internal combustion engines	\$749,166,976	1.0%
Telephone sets, including telephones for cellular networks	\$720,629,144	1.0%
Refrigerators, household type (electric or other), wether or not containing deep-freeze compartment	\$446,074,954	0.6%
Syringes, needles, catheters, cannulae and the like	\$434,295,984	0.6%
AC motor (Including univernal AC/DC) motors but excluding motros of an output not exceeding 37.5W	\$289,455,368	0.4%

Top 10 Exports		
Description	Exported Value	% of Total Exports
Parts of Automatic Data Processing Machines and Units Thereof memories, converters, logic circuits, amplifiers, clock and timing circuits.	\$1,588,748,646	4.1%
Television and Radio Broadcast Receivers	\$1,180,433,985	3.1%
Copper Wire - of refined copper	\$460,128,372	1.2%
Motor vehicles for the transport of persons	\$437,826,106	1.1%
Electronic Integrated Circuits	\$399,010,961	1.0%
Telephone sets, including telephones for cellular networks	\$355,552,692	0.9%
Printed Circuits	\$342,803,565	0.9%
Articles of Iron or steel	\$279,576,497	0.7%
Textile fabrics impregnated, coated or covered or laminated with plastics	\$251,015,945	0.7%
	\$200,624,539	0.5%

Source: Texas Center for Border Economic and Enterprise